

LinkToParent Action

This action will let you make a link in a popup window that changes the URL of the parent window when clicked. After the link is clicked, the popup window can either remain on top for additional links, or it can be automatically closed. If you run into any problems not covered in this tutorial, feel free to post a question on our online support forum at...

www.mindpalette.com/forum

Installation

To install the action, just copy the LinkToOpener.action file into your GoLive actions directory here...

(GoLive Application Folder) / Modules / JScripts / Actions / MindPalette


If you don't already have a "MindPalette" folder in the Actions directory, just add a new folder with that name. Then, be sure to restart GoLive so the actions are activated. Now we're ready to get started!

Adding the Action to Your Page

Usually, this action will be called by having the user click a link. You can attach the action to most other events as well, but we'll just cover clicking on a link in this manual.

First you'll need a popup window page. To have your page open into a popup window, you can use the OpenWindow action that came with GoLive, or if you need more controls and features, use our OpenPopupLite or OpenPopup2 Actions from www.mindpalette.com/actions

Open the page that will load into your popup window, and create your text or image link. Set the link URL to be just a # sign in the Inspector. Then, select your new link and go to the Actions Palette (GoLive 6 and under) or the Actions tab of the Rollovers and Actions Palette (GoLive CS). In the top left side of the palette, choose the Mouse Click event (or any other event, if you prefer).

Now add a new action to your event. With the event selected, click on the  page icon at the bottom of the right side of the palette. Now you should be able to use the Action menu below to select the LinkToParent Action (it should be in whichever action folder you installed it into, assuming you've restarted GoLive since installing).

Setting Action Options

Now we're ready to set all the options in the Actions (or Rollovers and Actions) palette. The first option is to tell the action what page URL to send the parent window to. Link that to your new page for the parent window.

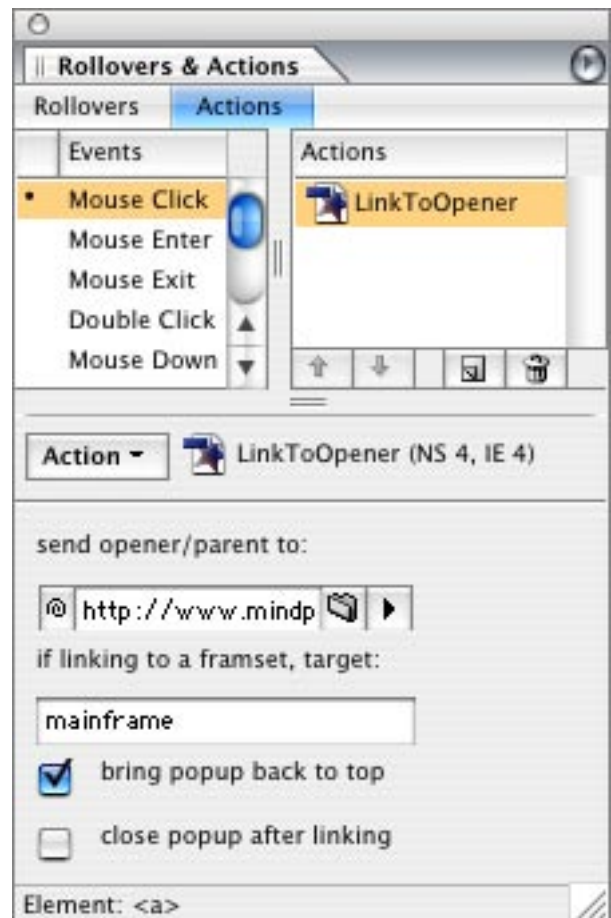
Next, there's a text field to enter the name of the frame in your parent page to use (if your page uses framesets). If your parent frame isn't in a frameset, then you won't use this option.

Bring popup back to top

With this option selected, the popup window will be forced back to the top after your parent window goes to the new URL. That way it won't get hidden behind your main window after the link is clicked.

Close popup after linking

If you want the popup window to close after the parent window has been sent to another page URL, select this check box.



Well, at this point you should have the action installed, added to your page, and set to the options you want. When testing your page, be sure to test in a real browser (in other words, not the GoLive preview tab).

If the action does not seem to be working on your page, you can post on our support forum for help. Be sure to include a link to your test page so we can take a look and provide more appropriate advice. Also, be sure to check out the forum's Action FAQ topic before posting your new forum question.

Good luck with your site, and thanks for supporting MindPalette!

Nate Baldwin
www.mindpalette.com